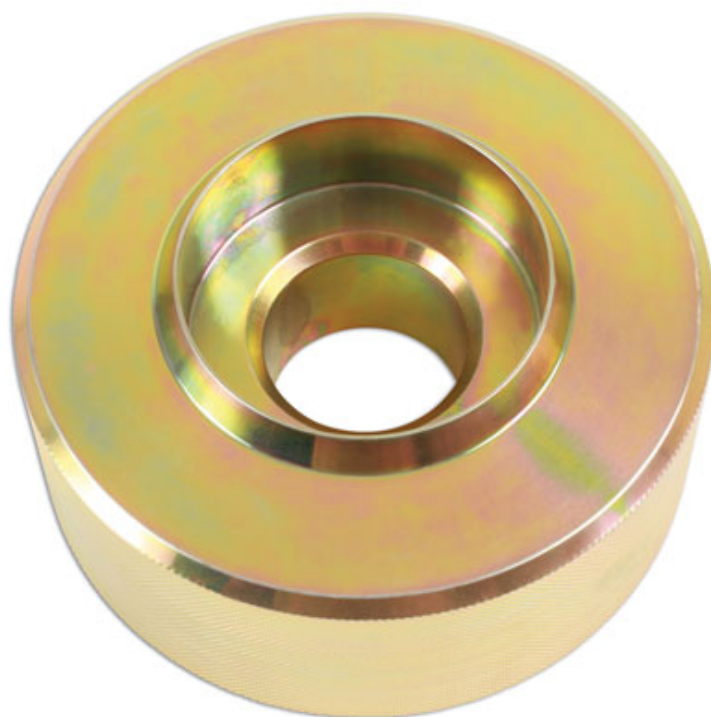


## DSG Clutch Gauge Block - for VAG

Clutch bearing gauge block for use on DSG gearboxes in the Volkswagen Audi models



### Additional Information

- Application: DSG (7 speed) gearboxes found in the VAG range from 2011 onwards.
- Equivalent to OEM T10466.
- Used to set and adjust the position of clutch engagement bearings.
- Use with Laser 6718 DSG Clutch Kit, 5371 Straight Edge and a suitable vernier caliper (Laser 4263).
- Manufactured from carbon steel.

<http://lasertools.co.uk/product/6907>

